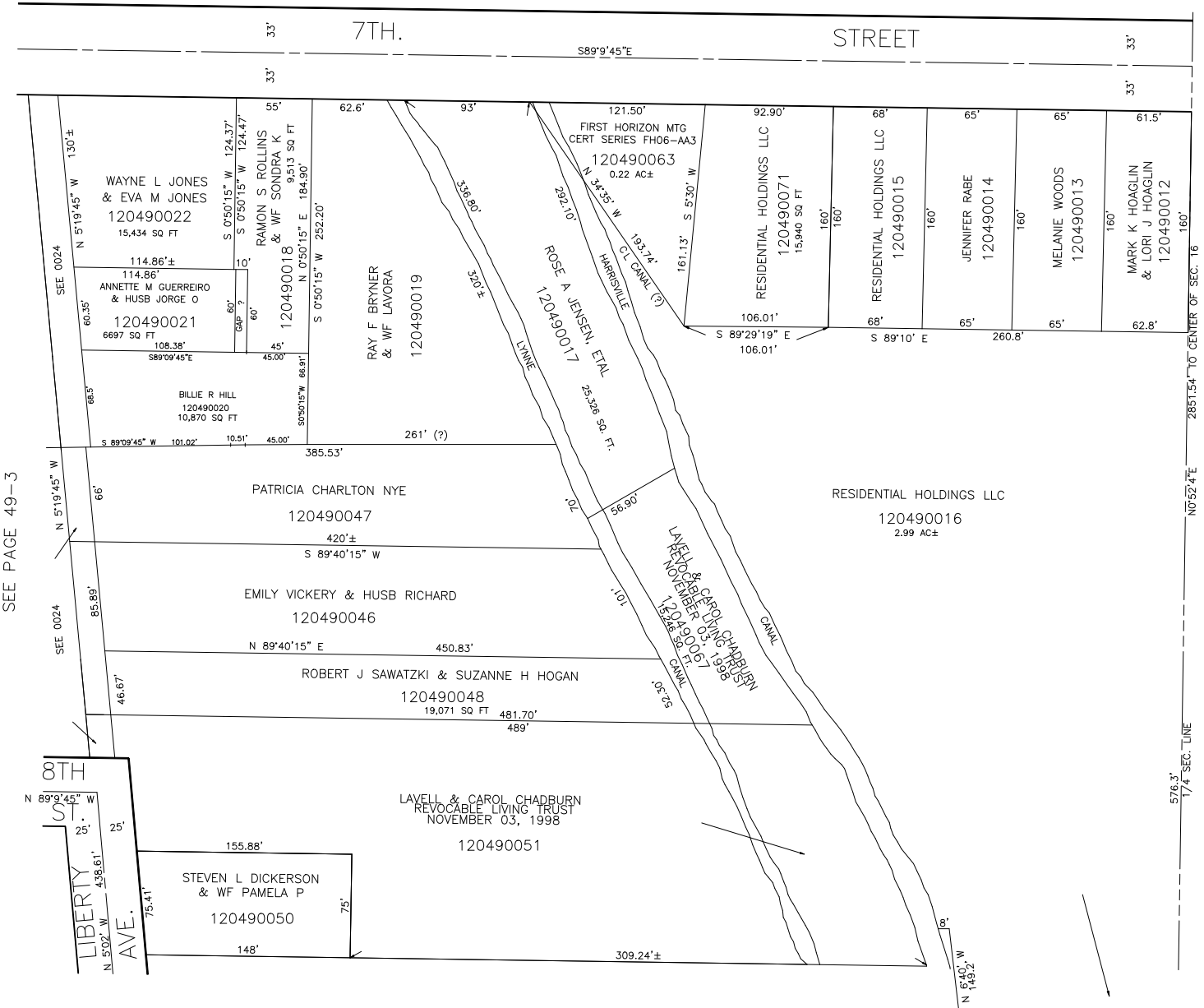


PART OF S.E. 1/4 OF S.W. 1/4 OF  
SECTION 16, T.6N., R.1W., S.L.B. & M.

IN OGDEN CITY  
SCALE 1" = 60'

TAXING UNIT: 25

SEE PAGE 49



SEE PAGE 49-3

SEE PAGE 49-2

SEE PAGE 49-2